

Managing wildfire smoke in Washington State

Ranil Dhammapala, PhD
ranil.dhammapala@ecy.wa.gov



Comparing recent wildfire seasons

Summer	Acres burned in WA	# of exceedences of PM _{2.5} NAAQS (FEM/ FRMs)
2012	259,526	123 (5)
2013	152,603	3 (0)
2014	386,972	32 (0)
2015	1,137,664	198 (15)
2016	293,717	1 (0)
2017	409,989	488 (137)



Air monitoring data

State AQ monitoring map:

<https://fortress.wa.gov/ecy/enviwa/default.ltr.aspx>

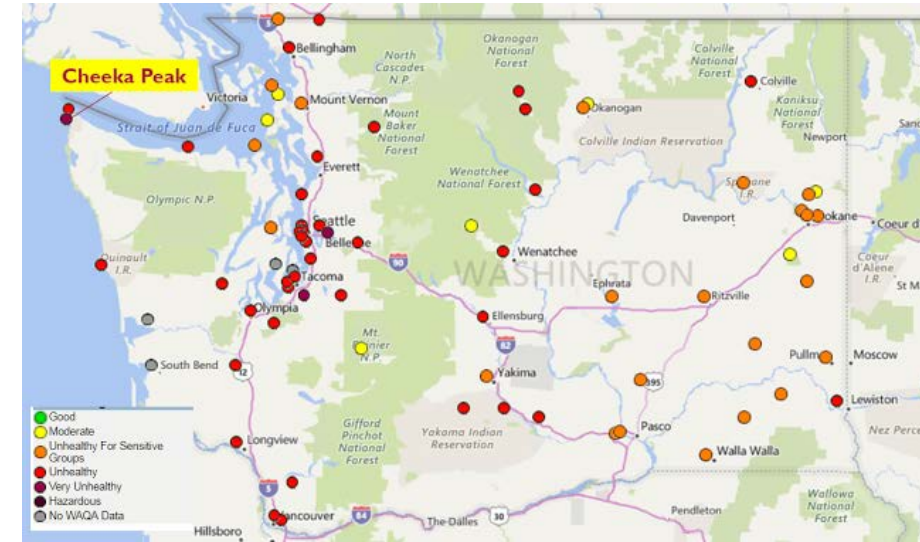
WA only, multiple pollutants, can download data

WA Smoke blog: <http://wasmoke.blogspot.com>

Nationwide data, PM_{2.5} only, not easy to download

data

When feasible, deploy temporary monitors to hard-hit areas



Washington Smoke Information

This site is an effort by county, state, and Federal agencies and Indian Tribes to coordinate and aggregate information for Washington communities affected by smoke from wildland fires. The information is posted here by the agencies themselves while volunteers built and maintain the page.

Monitors

- Good
- Moderate
- Unhealthy for Sensitive Groups
- Unhealthy
- Very Unhealthy
- Hazardous
- No Recent Data

Published by PNW smoke cooperators - full map

*The map above is not able to display all state air quality monitors. Click here to see all monitors in Washington: [WA Ecology Air Monitors](#)

Note: Some users might notice intermittent discrepancies in colors shown on the map of air quality monitors above, and those reported on the Department of Ecology's official page. This is because Ecology believes their method of calculating the air quality category (i.e. "Good", "Moderate", "Unhealthy" etc) is more protective of public health in Washington. If in doubt as to which better represents public health risk, use the more stringent of the two (i.e. the map showing worse air quality).

HOME WHERE'S THE FIRE? AIR QUALITY NOW SMOKE AND HEALTH LOCAL GOV WERCAMS AIR QUALITY FORECASTING

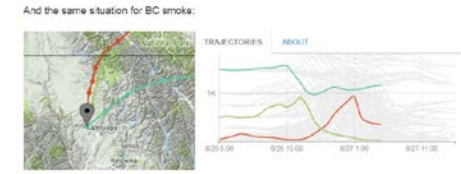
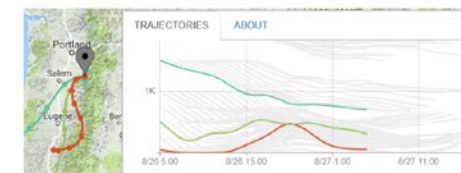
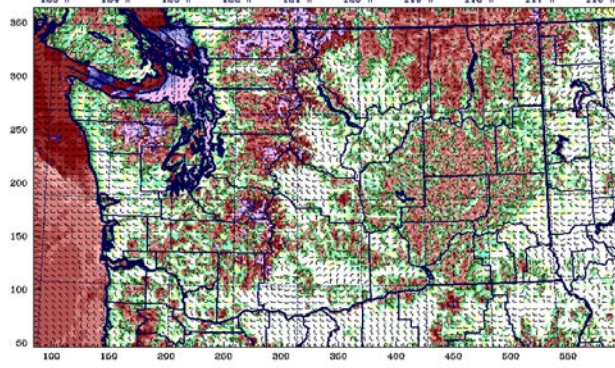
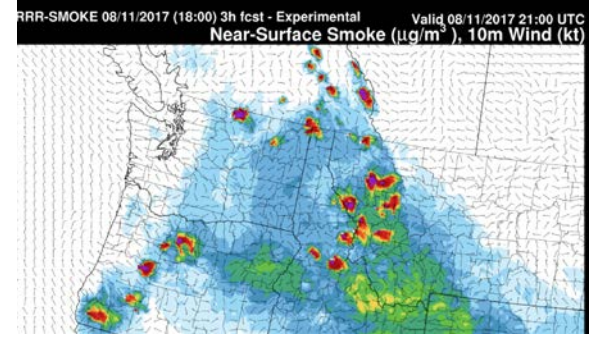
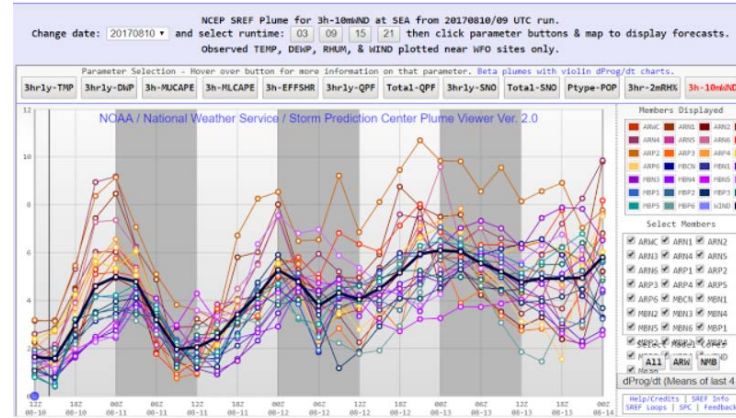
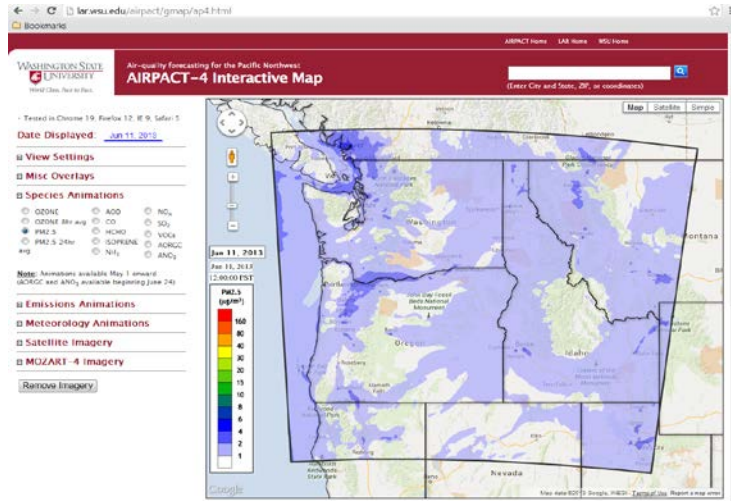
TUESDAY, SEPTEMBER 12, 2017

Central Washington Smoke Forecast - Tuesday, September 12, 2017

WE WANT TO HEAR FROM YOU!
We encourage you to post comments and questions on this blog so we can better serve you. To do so, click a link at the bottom of a

Smoke forecasting

Use multiple modeling products



Posted to smoke blog
<http://wasmoke.blogspot.com>

Statewide outlook in addition to ARA reports

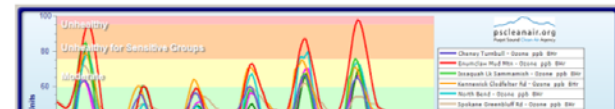
Will smoke start to clear by Friday? Yes ± maybe

Ah the challenges of communicating scientific uncertainty!

Wednesday's air quality conditions remained pretty close to a repeat of Tuesday. Thursday will plagia Wednesday. There is a *reasonable chance* that gradual improvements in western WA will commence afternoon. Eastern WA will have to wait a little longer. More on all that further down.

For today, expect mostly Good to Moderate air in southwest and northwest WA, while areas from Lynn Olympia can expect Unhealthy for Sensitive Groups or Unhealthy air at times. No change to the pessi most of eastern WA: Unhealthy for Sensitive Groups or worse ☹️

Ground level ozone (aka smog) concerns (which we blogged about recently) persist, exacerbated by v Locations in the Cascade foothills communities of east King and Pierce Counties and the Tr Cities rec of ozone this past week. An air quality advisory for smog has been issued.



Smoke on the west side should start clearing late tonight. No such luck in eastern WA

Satellite imagery shows impressive plumes from fires in the Cascades headed northeast.



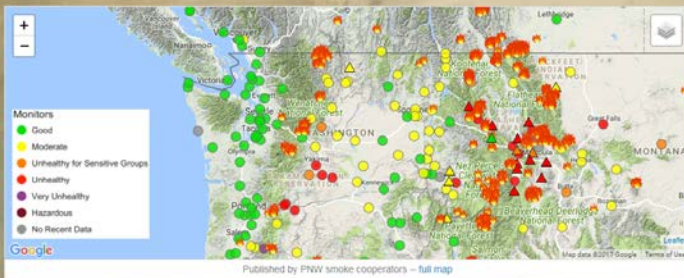
But it requires a look at a zoomed out loop to see the culprit behind all the smoke in western WA: smoke fr southwestern Oregon that moved over the Pacific and is now swinging over us as it departs to the east. Mt along the I-5 corridor are reporting Moderate to Unhealthy for Sensitive Groups (USG) air and that will rem

Partners use our data & forecasts to inform their citizenry

Coordinated Communications

Washington Smog 1.5 million hits in Aug-Sep 2017

This site is an effort by county, state, and Federal agencies and Indian Tribes to coordinate and aggregate information for Washington communities affected by smoke from wildland fires. The information is posted here by the agencies themselves while volunteers built and maintain the page.



*The map above is not able to display all state air quality monitors. Click here to see all monitors in Washington: [WA Ecology Air Monitors](#)

Note: Some users might notice intermittent discrepancies in colors shown on the map of air quality monitors above, and those reported on the Department of Ecology's official page. This is because Ecology believes their method of calculating the air quality category (i.e., "Good," "Moderate," "Unhealthy" etc) is more protective of public health in Washington. If in doubt as to which better represents public health risk, use the more stringent of the two (i.e. the map showing worse air quality).

HOME WHERE'S THE FIRE? AIR QUALITY NOW SMOKE AND HEALTH LOCAL GOV WEBCAMS AIR QUALITY FORECASTING

TUESDAY, SEPTEMBER 12, 2017

Central Washington Smoke Forecast - Tuesday, September 12, 2017

WE WANT TO HEAR FROM YOU!
We encourage you to post comments and questions on this blog so we can better serve you. To do so, click a link at the bottom of a

1.5 million hits/400K read blog

Washington Department of Ecology
Published by Camille St. Onge [?] · August 4

We've never seen numbers like this across the board. Washington's air quality is the worst in the nation. We're tracking the smoke and our toxicologist shares health tips. bit.ly/WASmoke18 #bcwildfire

Smoke chokes Washington - air quality worst in the nation

Air monitors around Washington state are lighting up the maps like a Christmas tree - and red lights aren't good. Almost every community i...

ECOLGYWA.BLOGSPOT.COM

KOMONews.com

Washington Department of Ecology
about a month ago

Media shares our Facebook & Tweets on websites

2017-08-02 02:00:37 UTC

The state is blanketed with #BCwildfire smoke. We're socked in and it won't move out soon enough according to our latest forecast <http://bitly.com/WASmoke17>

163 191 3.7K



Television
Radio
Newspaper

K5

03:05 / 03:49 HD CC

Video Post

Video watched 145K times

Washington Department of Ecology: Smoked out? Stay indoors.

Our toxicologist is urging people to stay indoors if you can. Now is not the time to exercise outdoors. Save that 5K run for another day. Consider putting off outdoor activities, like mowing your yard, until air quality has improved. Get air quality conditions and forecasts...